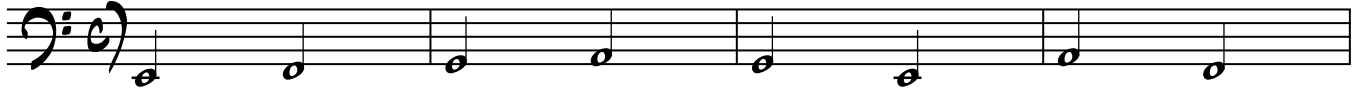


READING TO THE 5TH FRET IN C (ANSWER SHEET)

FOR ALL OF THESE EXERCISES, FIRST YOU SHOULD NAME THE NOTE AND THEN WRITE THE NOTE NAME ON TOP OF THE NOTE AS WELL AS PLAY IT ON YOUR BASS.

THESE ONES ARE ALL ON THE E STRING:

E F G A G E A F



THESE ONES ARE ALL ON THE A STRING:

A B C D B C A D



THESE ONES ARE ALL ON THE D STRING:

D E F G E G F D



THESE ONES ARE ALL ON THE G STRING:

G A B C A C G B

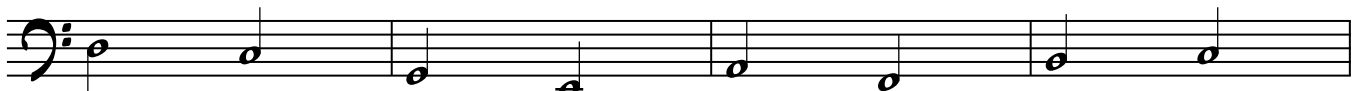


THESE NEXT TWO LINES ARE ALL ON THE E AND A STRINGS:

A C G E B G F C



D C G E A F B C



THESE NEXT TWO LINES ARE ALL ON THE A AND D STRINGS:

A D G F C B E D

25

F B C F E G D C

29

THESE NEXT TWO LINES ARE ALL ON THE D AND G STRINGS:

D A G C B F E D

33

E G B A F C B E

37

THESE TWO LINES AND THE REST OF THE LINES ON THE NEXT PAGE ARE ON ALL OF THE STRINGS:

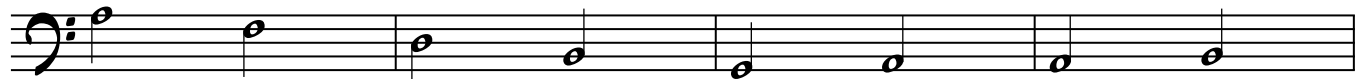
E G A E B C G B

41

F E B A E D G B

45

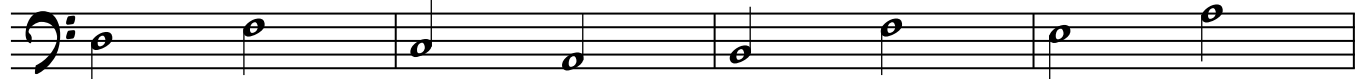
A F D B G A A B



49

Detailed description: A single musical staff in bass clef with a key signature of one flat (Bb). The staff contains eight half notes: A2, F2, D2, B1, G1, A1, A1, and B1. The notes are positioned on the 5th fret of the strings.

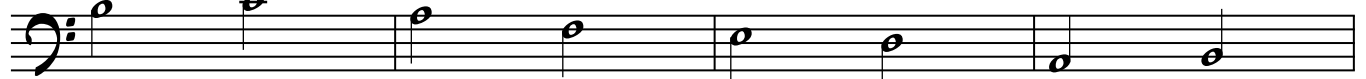
D F C A B F E A



53

Detailed description: A single musical staff in bass clef with a key signature of one flat (Bb). The staff contains eight half notes: D2, F2, C2, A1, B1, F2, E2, and A2. The notes are positioned on the 5th fret of the strings.

B C A F E D A B



57

Detailed description: A single musical staff in bass clef with a key signature of one flat (Bb). The staff contains eight half notes: B1, C1, A1, F2, E2, D2, A2, and B2. The notes are positioned on the 5th fret of the strings.

E D A F E B A E



61

Detailed description: A single musical staff in bass clef with a key signature of one flat (Bb). The staff contains eight half notes: E2, D2, A2, F2, E2, B2, A2, and E2. The notes are positioned on the 5th fret of the strings.

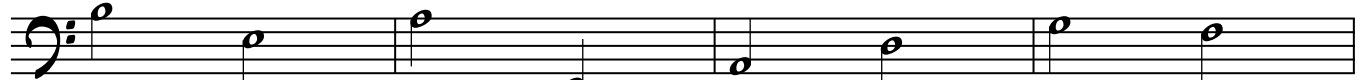
B A E A C E B G



65

Detailed description: A single musical staff in bass clef with a key signature of one flat (Bb). The staff contains eight half notes: B1, A1, E1, A1, C1, E1, B1, and G1. The notes are positioned on the 5th fret of the strings.

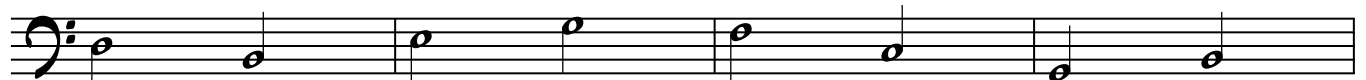
B E A E A D G F



69

Detailed description: A single musical staff in bass clef with a key signature of one flat (Bb). The staff contains eight half notes: B1, E1, A1, E1, A1, D2, G2, and F2. The notes are positioned on the 5th fret of the strings.

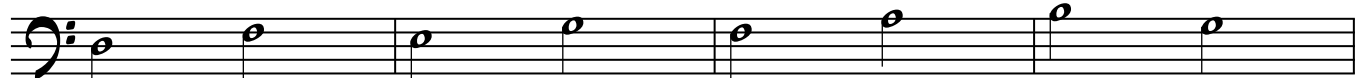
D B E G F C G B



73

Detailed description: A single musical staff in bass clef with a key signature of one flat (Bb). The staff contains eight half notes: D2, B2, E2, G2, F2, C3, G3, and B3. The notes are positioned on the 5th fret of the strings.

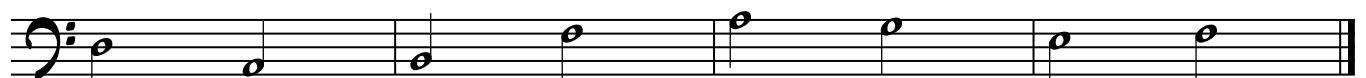
D F E G F A B G



77

Detailed description: A single musical staff in bass clef with a key signature of one flat (Bb). The staff contains eight half notes: D2, F2, E2, G2, F2, A2, B2, and G2. The notes are positioned on the 5th fret of the strings.

D A B F A G E F



81

Detailed description: A single musical staff in bass clef with a key signature of one flat (Bb). The staff contains eight half notes: D2, A2, B2, F2, A2, G2, E2, and F2. The notes are positioned on the 5th fret of the strings.