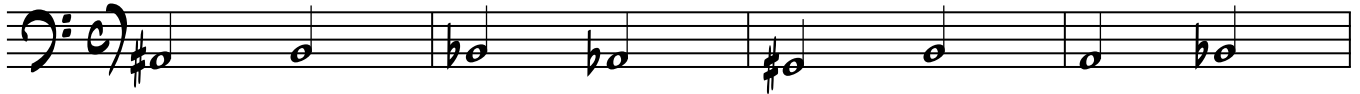


READING EVERYTHING UP TO THE 7TH FRET (ANSWER SHEET)

FOR THESE EXERCISES, YOU SHOULD TRY TO FIRST NAME THE NOTE AND THEN WRITE THE NAME OF THE NOTE ABOVE IT AND PLAY IT ON YOUR BASS. IN THIS CASE, TRY TO PLAY IT IN BOTH PLACES ON YOUR BASS (IF POSSIBLE).

THESE ARE ON THE E STRING:

A# B Bb Ab G# B A Bb



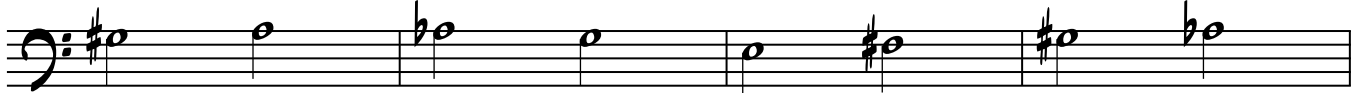
THESE ARE ON THE A STRING:

D# Eb E D# C D Eb C#



THESE ARE ON THE D STRING:

G# A Ab G E F# G# Ab



THESE ARE ON THE G STRING:

C# B D C# Db C Bb C#



THESE ARE ON BOTH THE E AND A STRINGS:

E G C# Eb Db E C G#



B A# Bb C# B Eb D# Ab



READING EVERYTHING UP TO THE 7TH FRET (EXERCISES)

2

THESE ARE ON THE A AND D STRINGS:

A E Ab C# Eb F# A G#

25

E Bb C# F G Ab Eb F#

29

THESE ARE ON THE D AND G STRINGS:

D F# C C# Db Bb Eb F#

33

E G# Ab E Db F# C Bb

37

THESE ARE ON ALL OF THE STRINGS:

E Ab D# G Db C# Bb F#

41

D Eb Bb C# Gb F# Bb D#

45

B G# Eb Bb D# E F# Gb

49

READING EVERYTHING UP TO THE 7TH FRET (EXERCISES)


Ab D# Gb A F# D# Eb B



53

Detailed description: This block contains the first exercise. Above the staff, the notes are labeled as Ab, D#, Gb, A, F#, D#, Eb, and B. The staff itself shows these notes on a bass clef with a key signature of one flat (Bb). The notes are: Ab (2nd line), D# (3rd space), Gb (2nd space), A (3rd line), F# (4th space), D# (3rd space), Eb (2nd space), and B (3rd line). The exercise number 53 is written below the first measure.

Ab C# Db B Eb G# C# F



57

Detailed description: This block contains the second exercise. Above the staff, the notes are labeled as Ab, C#, Db, B, Eb, G#, C#, and F. The staff shows these notes on a bass clef with a key signature of one flat (Bb). The notes are: Ab (2nd line), C# (3rd space), Db (2nd space), B (3rd line), Eb (2nd space), G# (4th space), C# (3rd space), and F (2nd space). The exercise number 57 is written below the first measure.


Ab G C# F# Eb B C# Eb



61

Detailed description: This block contains the third exercise. Above the staff, the notes are labeled as Ab, G, C#, F#, Eb, B, C#, and Eb. The staff shows these notes on a bass clef with a key signature of one flat (Bb). The notes are: Ab (2nd line), G (2nd space), C# (3rd space), F# (4th space), Eb (2nd space), B (3rd line), C# (3rd space), and Eb (2nd space). The exercise number 61 is written below the first measure.


A Bb Bb C# C D Db A#



65

Detailed description: This block contains the fourth exercise. Above the staff, the notes are labeled as A, Bb, Bb, C#, C, D, Db, and A#. The staff shows these notes on a bass clef with a key signature of one flat (Bb). The notes are: A (3rd line), Bb (2nd space), Bb (2nd space), C# (3rd space), C (2nd space), D (3rd line), Db (2nd space), and A# (3rd space). The exercise number 65 is written below the first measure.

G# Bb Db E Bb A C# E



69

Detailed description: This block contains the fifth exercise. Above the staff, the notes are labeled as G#, Bb, Db, E, Bb, A, C#, and E. The staff shows these notes on a bass clef with a key signature of one sharp (F#). The notes are: G# (3rd space), Bb (2nd space), Db (2nd space), E (3rd line), Bb (2nd space), A (2nd space), C# (3rd space), and E (3rd line). The exercise number 69 is written below the first measure.

F# Ab E B Db F# Eb F#



73

Detailed description: This block contains the sixth exercise. Above the staff, the notes are labeled as F#, Ab, E, B, Db, F#, Eb, and F#. The staff shows these notes on a bass clef with a key signature of one sharp (F#). The notes are: F# (3rd space), Ab (2nd space), E (3rd line), B (3rd line), Db (2nd space), F# (4th space), Eb (2nd space), and F# (3rd space). The exercise number 73 is written below the first measure.

Db A# A# Ab C# Eb F# D#



77

Detailed description: This block contains the seventh exercise. Above the staff, the notes are labeled as Db, A#, A#, Ab, C#, Eb, F#, and D#. The staff shows these notes on a bass clef with a key signature of one flat (Bb). The notes are: Db (2nd space), A# (3rd space), A# (3rd space), Ab (2nd space), C# (3rd space), Eb (2nd space), F# (4th space), and D# (3rd space). The exercise number 77 is written below the first measure.